

Company Profile



Who we are and what we do

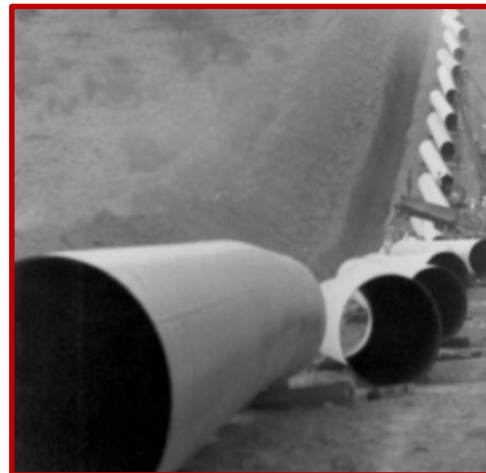
Established in 1937, the C.A.T. Group is a world leader in the contracting industry serving a wide spectrum of sectors such as the Oil & Gas, Energy, Utilities, Civil, Infrastructure and Buildings.

We offer integrated solutions in Engineering, Procurement, Construction and Facilities Management under various contracting schemes developed to suit our Clients' best interests.

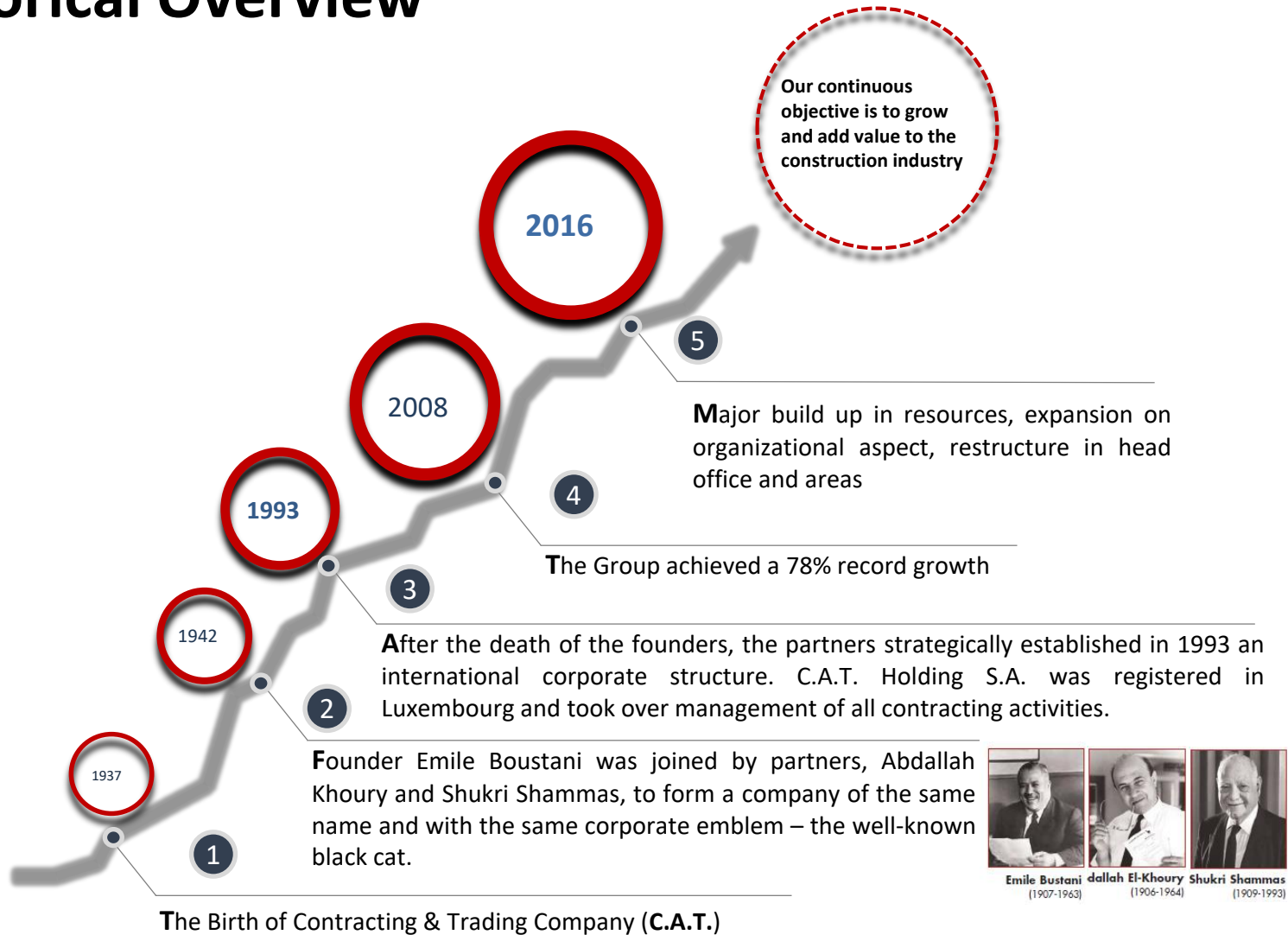
Our Project Management competencies and skills emanate from a family of professionals that caters to an array of disciplines such as Pipelines, Mechanical, Electrical, Instrumentation and Civil.

C.A.T. ranked number 1 International Contractor in Pipelines, and 91 as a General International Contractor in 2016 according to the Engineering News-Record (ENR) Sourcebook

ENR THE TOP 250 INTERNATIONAL CONTRACTORS



Historical Overview

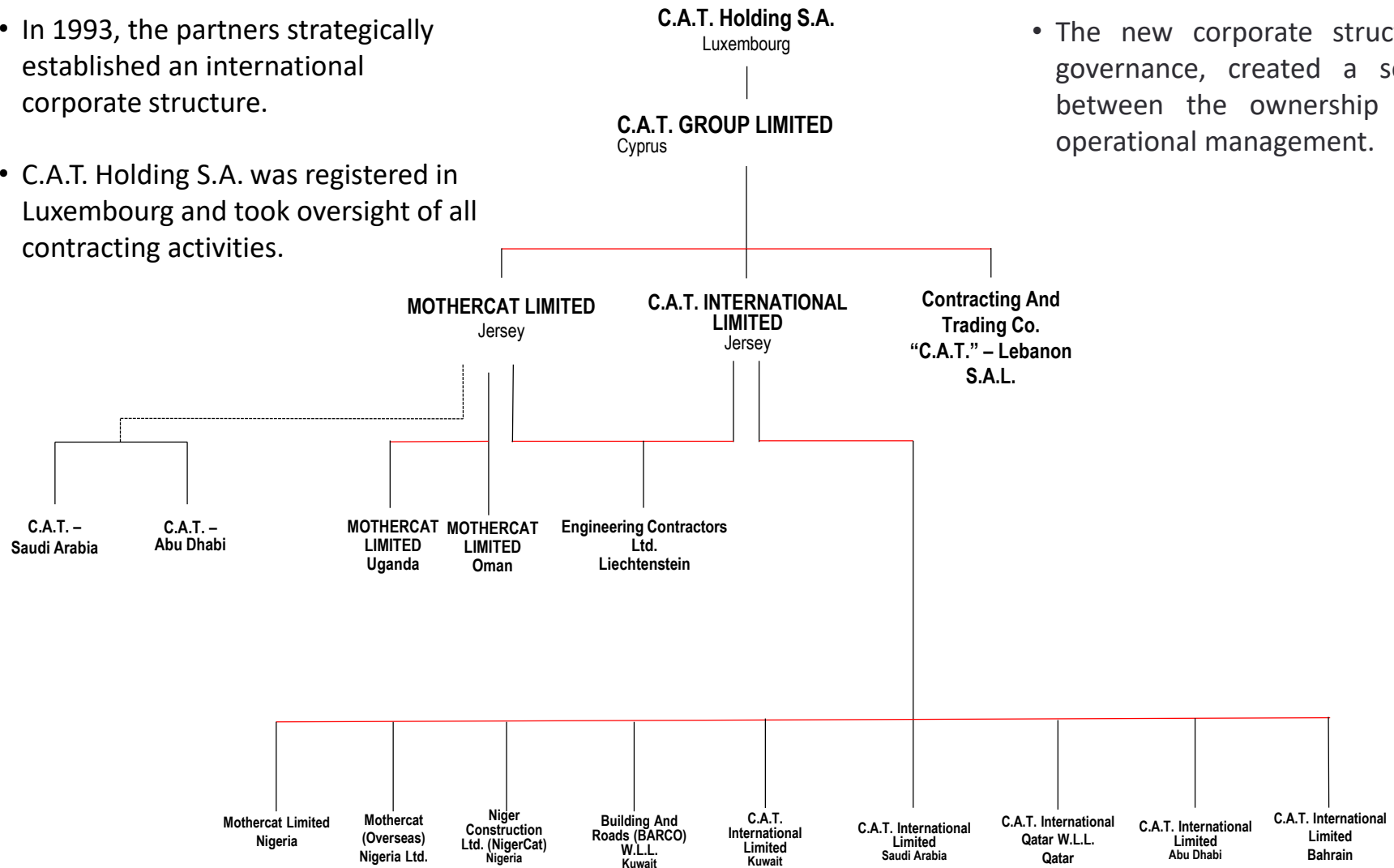


Legal Structure & Corporate Governance

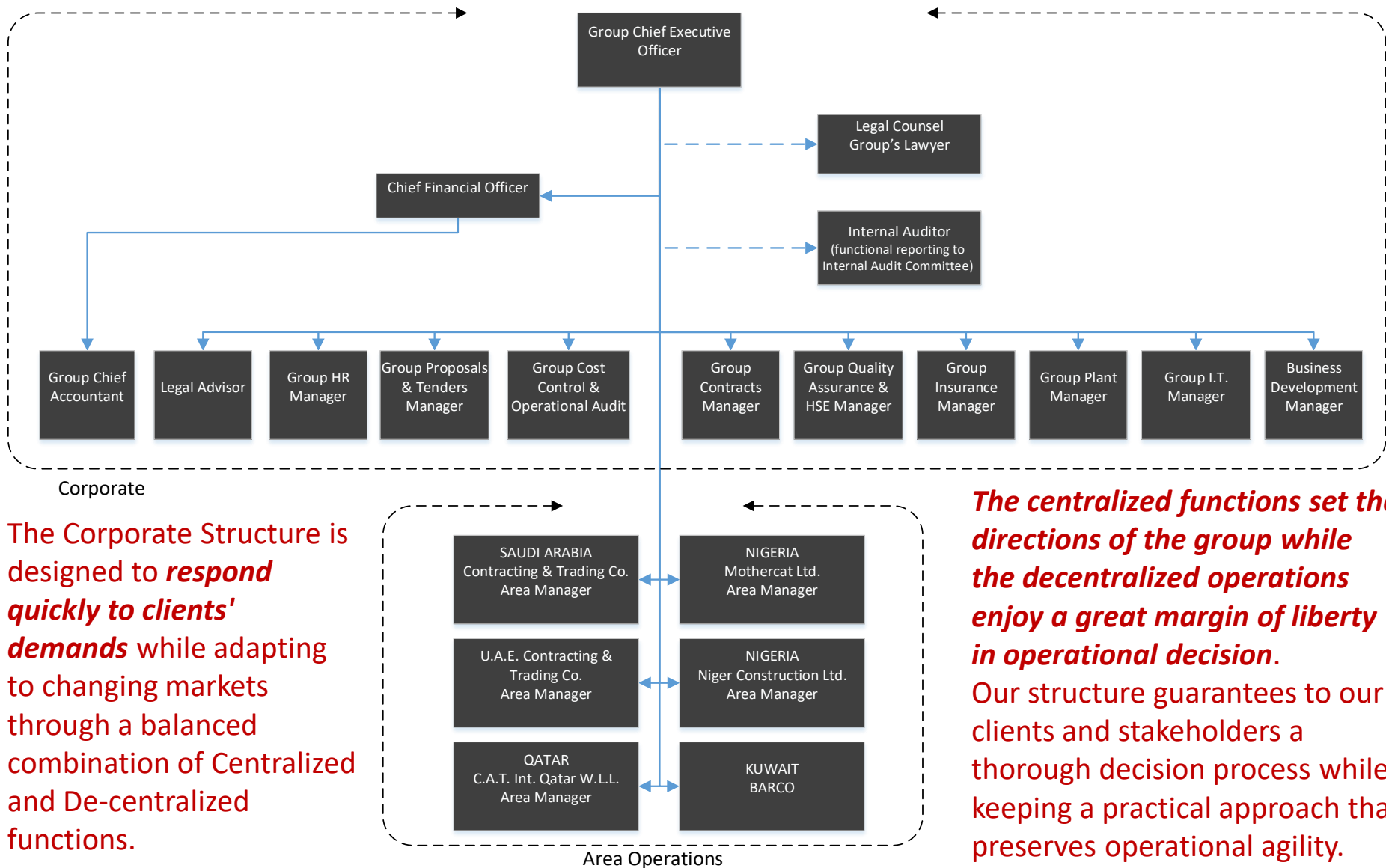
The first construction company in the Middle East with an employed professional management.

- In 1993, the partners strategically established an international corporate structure.
- C.A.T. Holding S.A. was registered in Luxembourg and took oversight of all contracting activities.

- The new corporate structure and governance, created a separation between the ownership and the operational management.



Corporate Organization Chart



The Group in Numbers



The Group in Numbers



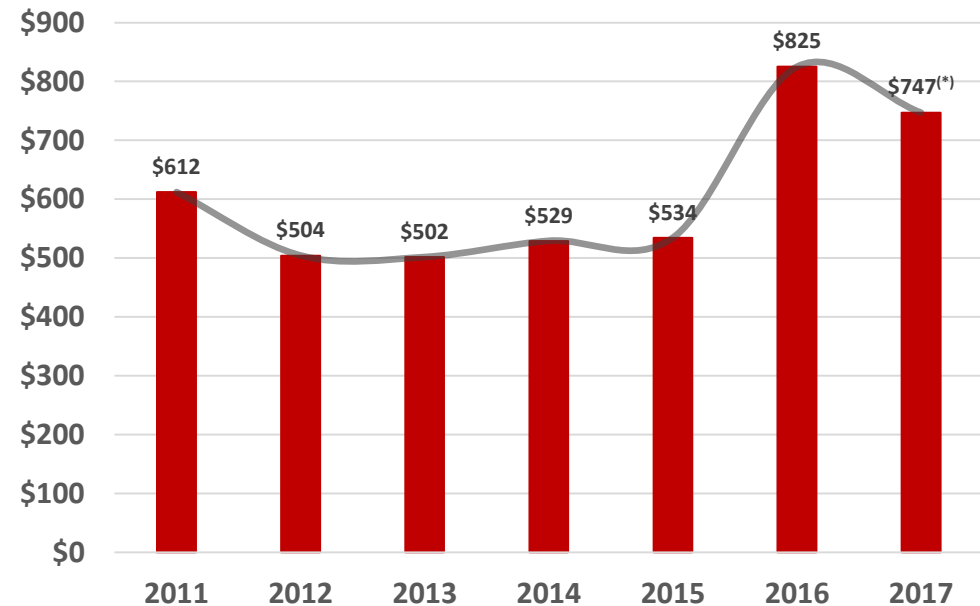
Over **12,000**
Qualified
Professionals
deployed
worldwide

More than **4,750**
piece of owned
equipment and
machinery



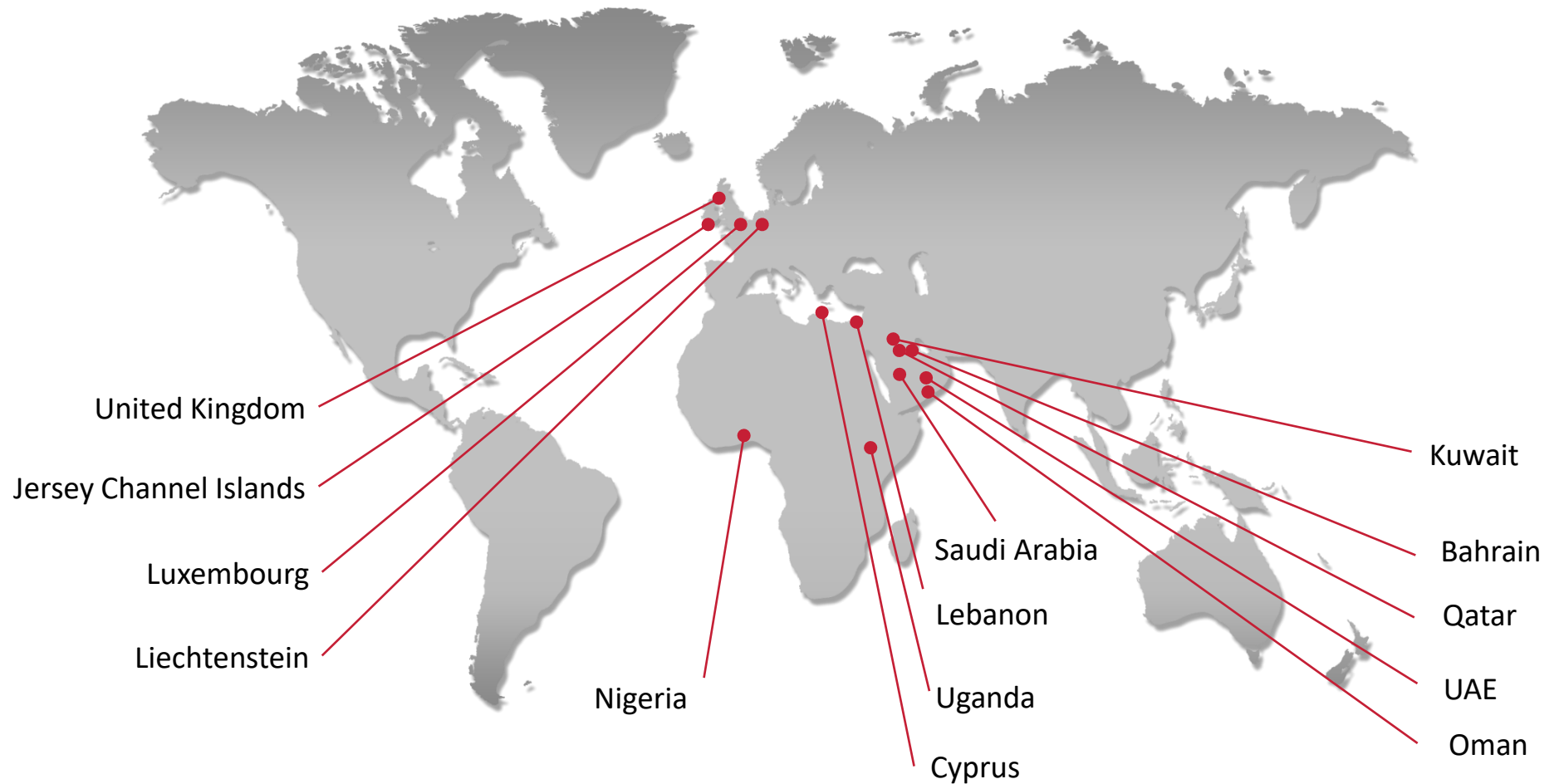
0.8 Billions USD Achieved in 2016

Turnover in Million USD



(*) Estimated

Geographical Presence



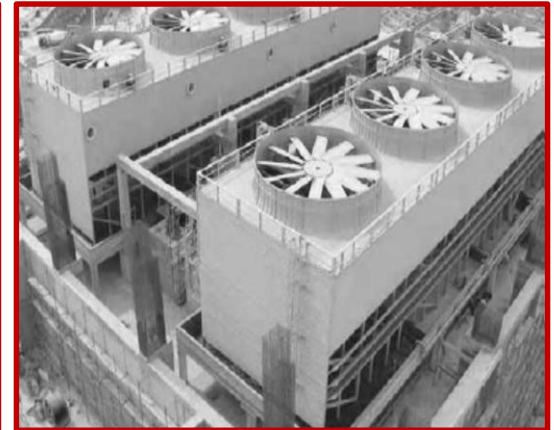
Sectors Served

The Group has been serving a spectrum of sectors with an array of services ranging from EPC to Facility Management.

Sector	Sub-Sector	Activities
Oil & Gas	<ul style="list-style-type: none"> • Pipelines • Upstream and Tie-ins • Gas Plants • Networks 	<ul style="list-style-type: none"> • Refineries • Petrochemical Plants • Storage facilities • ME&I Works • Civil Works • Maintenance
Water	<ul style="list-style-type: none"> • Distribution • Pumping Stations • Desalination 	<ul style="list-style-type: none"> • Water Treatment (Waste) • Storage • District Cooling • ME&I Works • Civil Works • Maintenance
Power	<ul style="list-style-type: none"> • Power Plants • Substations 	<ul style="list-style-type: none"> • ME&I Works • Civil Works • Maintenance
Civil & Infrastructure	<ul style="list-style-type: none"> • Buildings • Roads • Transportation 	<ul style="list-style-type: none"> • ME&I Works • Civil Works • Maintenance

Mission & Vision

The mission of the C.A.T. Group is to add value to the construction industry by providing expert contracting services, based on up-to-date knowledge, quality assurance, safety, cost awareness, and on-time delivery.



C.A.T.'s mission is reflected by gaining back its place in the industry by prominent growth and leadership. Competent management, selective recruitment based on social-oriented human resource policies, and focus on quality have resulted in successful completion of many complex projects over the decades.



Quality, Health, Safety & Environment (QHSE)

The C.A.T. Group maintains high standards in all its services especially in Quality, Health, Safety and Environmental matters.

The Group has developed and is adopting an Integrated Management System strengthened with an ERP system extending to all its operational entities, embracing the requirements of:

- ISO 9001 for Quality
- OHSAS 18001 for HSE

Safety First		
C.A.T. Group Safety 2016 (based on Approx. 39.9 million man-hours)		International Benchmark
KPI	C.A.T Group	IPLOCA * 2016
LTIF (OSHA – Lost Time Injury Frequency)	0.02	0.09
TRIR (OSHA – Total Recordable Injury Rate)	0.09	0.45

(*) **IPLOCA**: International Pipe Line & Offshore Contractors Association



Quality, Health, Safety & Environment (QHSE)

Safety statistics				
Year	2015	2016	2017	2018
Man-Hours Worked	26,119,267	29,505,379	32,215,897	39,897,857
Fatalities	0	0	1	1
Lost Time Injuries	10	3	14	3
Restricted Work Injury Cases	0	2	0	1
Medical Treatment Cases	1	14	2	13
Lost Time Injury Frequency	0.08	0.02	0.086	0.02
Total Recordable Incident Rate	0.08	0.13	0.1	0.09
Safe Observations	443	514	706	1063
Major Environmental Incidents	0	0	0	0

Manpower Distribution

Category	Discipline When Applicable				
	Civil	Mechanical	E&I	General	Total
General Management	-	-	-	10	10
Administration and Accounts	-	-	-	520	520
Project Manager	9	7	0	-	16
Construction Manager	9	5	2	-	16
Senior Engineer	18	18	8	-	44
Engineer	69	93	31	5	198
Superintendent, Supervisor	31	37	19	-	87
General Foreman, Foreman	132	96	26	-	254
Quantity Surveyor	8	1	1	-	10
Draftsman	7	4	0	-	11
Skilled Workers	1,956	1,349	391	1,735	5,431
Un-skilled Workers	-	-	-	3,095	3,095
Planning & Cost Control Manager	-	-	-	5	5
Planning / Cost Control Engineer	-	-	-	3	3
Planning / Cost Control Officer	-	-	-	12	12
QA/QC Manager	-	-	-	13	13
QA/QC Engineer	-	-	-	4	4
QA/QC Supervisor / Inspector	-	-	-	276	276
HSE Manager	-	-	-	6	6
HSE Engineer	-	-	-	0	0
HSE Supervisor / Officer	-	-	-	197	197
Employees Hired from Local Markets (not on C.A.T. Visa)	-	-	-	1,969	1,969
Total	2,239	1,610	478	7,850	12,177

C.A.T.'s most important asset remains its human capital. This has been translated through a high retention rate among the employees or as we like to call it, "the big family".



C.A.T.'s family is reputed for its loyalty, dedication and hard work together with a wealth of experience and know-how that is constantly being passed and recycled with the next generation of leaders.

Plant & Equipment

4,761 Piece of Owned Equipment

PLANT		
Description	Capacity	Qty.
Air Compressor	33 - 1200 CFM	174
Articulating Boom Lift	230 KG	5
Asphalt Paver - Wheeled / Tracked	7 - 10 CY	18
Asphalt Plant - Mobile / Stationary	60 - 150 TPH	9
Asphalt Pump	4 INCH	3
Asphalt Sprayer - Truck Mounted	1000 - 3000 GAL.	20
Barge Unifloat	30 - 200 Tons	1
Boring Machine	06 - 42 INCH	2
Chipping Spreader	10 - 15 FT.	5
Coat Wrap Machine	42 - 48 INCH	1
Compactor - Plate	101 - 700 KG.	10
Compactor - Sheep Foot	32 Tons	3
Concrete Batching Plant	30 - 60 CUM/HR	5
Concrete Mixer - Towing	12.36 - 26.50 CUFT	45
Concrete Pump - Stationary/Truck Mtd.	115 - 125 CUM/HR	3
Concrete Slipform Paver	Terex/CMI	1
Concrete Transit Mixer	3.5 - 7 CUM	35
Crane - All Terrain	25 - 200 Tons	5
Crane - Crawler Lattice Boom	25 Tons	1
Crane - Rough Terrain	18, 30, 50, 90 Tons	47
Crane - Tower	from 1 to 12.5 Tons	25
Crane - Truck Mounted Lattice Boom	75 - 140 Tons	3
Crane - Truck Mtd. Telescopic Boom	50 - 80 Tons	3
Crane - Industrial Truck Mounted	25 Tons	2
Crushing Plant	100-250 TPH	6
Crusher / Tracked - Impact, Jaw	Parker, Sandvik up to 500 t/h	2
Screening Plant / Tracked	Parker	2
Drill - Tracked / Twin	750 - 1200 CFM	30
Dumper - Light	2 Tons	4
Excavator - Tracked / Wheeled	CAT 320,324,329,330,336,349	145
Flood Light	3 - 11 KW	37
Forklift	3 - 14 Tons	27
Generator - Diesel Engine	10 - 1100 KW	300
Internal Line-Up Clamp	Up to 60 INCH	55
Lifting Scissor	2000 KG	2
Milling Machine	20280 KG	2
Motor Grader	CAT 140H,160H,120K,140K	56
Pipe Bending Machine	Up to 60 INCH	12
Pipe Facing Machine	Up to 60 INCH	3

PLANT		
Description	Capacity	Qty.
Pipe Vacuum Lifter	16 tonne	1
Pump - Centrifugal	2 - 6 INCH	2
Pump - Dewatering	4 - 6 INCH	54
Pump - Filling,Jetting	6 - 10 INCH	8
Pump - Test	2250 - 10000 PSI	15
Roller - Pneumatic	21 - 30 Tons	29
Roller - Vibrating Rubber & Steel	5 - 13 Tons	67
Roller - Vibrating Steel / Static	4 - 11 Tons	39
Roller - Walk Behind / Ride On	675 - 2600 KG	15
Skid Steer Loader	590 - 860 KG	59
Skidder	Caterpillar,MF415,MF440	10
Soil Stabilizer	6 CY	2
Sweeper	Rosco, Bunce	10
Telehandler	4000 KG	10
Tractor Backhoe/Loader	CAT,JCB,CASE	37
Tractor Dozer Tracked / Wheeled	CAT D4,D6,D7,D8,D9	83
Tractor Pipe Layer	CAT 561,572,583,587,594	77
Tractor Pipe Welding	CAT D5,D6,D7/Vietz 1800	24
Tractor Shovel Wheeled / Tracked	CAT936,938,950,962,966,980	121
Trencher - Walk Behind / Tracked	8 - 66 INCH	5
Trencher-Surface Miner / Tracked	Vermeer T1255	1
Wedge Mandrell (Pneumatic)	10 - 32 INCH	17
Weighbridge	80 - 100 Tons	12
Welding Bullets	300 - 600 AMP	2
Welding Machine - Diesel	225 - 500 AMP	307
Welding Machine - Sub Arc Auto	300 AMP	3
Welding Machine - TIG	275 AMP	8
Welding Rectifier / Transformer	225 - 600 AMP	300
Welding Set - Automatic	350 AMP	45

TRANSPORT		
Description	Capacity	Qty.
Ambulance	1 Stretcher	21
Bus	10-66 SEAT	122
Pick-Up D/Cabin	Toyota, Mitsubishi, Nissan ...	510
Pick-Up S/Cabin	Toyota, Mitsubishi, Nissan ...	48
Saloon Car	5 Seats	99
Station Wagon 4x4	5 - 10 SEAT	160
Tractive Unit	18 - 33 T.GVW	264



TRANSPORT		
Description	Capacity	Qty.
Trailer Bitumen Tank	5000 - 7500 GAL.	12
Trailer Flat Bed	20 - 50 Tons	68
Trailer Fuel Tanker / Crude Oil	1500 - 7500 GAL.	13
Trailer Low Bed	50 - 95 Tons	46
Trailer Pipe Dolly	30 - 50 Tons	46
Trailer Semi - Storage/Cable Drum	8 - 25 Tons	8
Trailer Tipping	20 - 40 CUM	83
Trailer Water Tanker	6000 - 8500 GAL.	20
Truck - Load Carrying/ Maint.	8 - 26 T.GVW	103
Truck - Load w/Crane	9 - 28 T.GVW	63
Truck Tanker - Fuel	1000 - 4500 GAL.	37
Truck Tanker - Water	1000 - 5000 GAL.	72
Truck Tanker - Sewage	3500 GAL.	14
Truck Tipper	7 - 40 T.GVW	337
Van	1000 KG	15

INSTRUMENTS/SPECIAL TOOLS/ANCILLARY EQUIPMENT ETC.		
Description	Capacity	Qty.
Analytical Instrument	Spectrotest PMI	1
Asphalt Storage & Heating Unit / Tank	8000 GAL.	7
Lathe Machine	3000x760mm	2
Hammer - Piling	28000 - 39700 FTLB	2
Hammer - Vibratory	360-1250kN	2
Ice Machine	7000 LBS	3
Pile Breaker	750 KG	1
Pipe Roli Cradle	Up to 60 INCH	42
Rock Breaker - Hydraulic	2350 - 2540 KG	41
Vertical Drilling Machine	40mm	1
Servicing & Lubricating Unit	for Mobile Truck	26

Some of Our Projects

Some of Our References

Pipelines

Master Gas System (MGS) 56 Inch EWG-2 Loop -1 Pipeline from KM 916 near East - West PS 4 to PS 7

LOCATION

SAUDI ARABIA

CLIENT

SAUDI ARAMCO

Construction of:

- 310 km of 56 inch Diameter Grade X 70. 0.562 - 1.012 Inch W.
- 4 Launcher / Receivers
- 19 Mainline Valve Stations
- Leak Detection System
- Corrosion Monitoring System
- Cathodic Protection System
- RTUs and other facilities



Master Gas System SRG 2 Pipeline PCV Meter Station Upgrades & UBTG-1 Sales Gas Project

LOCATION

SAUDI ARABIA

CLIENT

SAUDI ARAMCO

Installation of:

- 55.5 km 56" Dia. Sales Gas Line with PCV & Metering Station
- Gas Filter Stations
- Associated Facilities.
- Black Powder filtration System Scope to Master Gas System SRG 2 Pipeline PCV Meter Station Upgrades
- Installation of 57 km of 56 Inch FBE Coated Sales Gas Pipeline
- Launcher and Receiver Facilities
- Mainline Valve Stations.



Replacement of SK3, KRT-3, KRTJ-1 & SJ1 Pipeline, Safaniyah; Khursaniyah; Juaymah & Ras Tanura

LOCATION

SAUDI ARABIA

CLIENT

SAUDI ARAMCO

- Replacement of 123km of KRT-3 Crude Oil pipeline between km 68 and km 191 with 56" pipe and 19km of KRT-3 from km191 to km210 (Ras Tanura Refinery- zero Anchor) with 48" pipe.
- Replacement of the 48" SK-3 pipeline between the Safaniyah Pump station and the new trap area located at km68.
- Replacement of the 48" KRT J-1 pipeline between km191 and Ju'aymah Tank Farm area.
- Replacement of 77 kilometers of pipe segments for the SJ-1 pipeline between the Safaniyah Pump Station and km105.



EPC of External IWPP Facilities

LOCATION

JUBAIL, SAUDI ARABIA

CLIENT

MARAFIQ

Scope of work is the EPC for:

- 30" to 36" dia. of 12km Sales Gas Pipeline from Saudi Aramco Berri Junction to IWPP
- Scraper Launcher & Receiver
- 1500mm dia. of 21.5 km Product water Transmission Lines to EPS and NWPS



Expand Shaybah – Abqaiq Pipeline Capacity

LOCATION

SAUDI ARABIA

CLIENT

SAUDI ARAMCO

- 220 Kms of 42 inch Crude Oil Pipeline with 2 LR/ RCVR Areas
- 5 Mainline Valve Stations
- 6 Surge Relief Skids
- Leak Detections System
- Corrosion Monitoring System
- Cathodic Protection System
- RTUs
- 2 Operation Shelters



East West Pipeline

LOCATION

SAUDI ARABIA

CLIENT

PETROMIN (SAUDI ARABIA)

Project in JV with Houston Contracting Co.

Pipe laying of **536 kilometers of 48" diameter buried pipeline** from the midpoint of the line to the port of Yanbu on the Western Coast of Saudi Arabia.

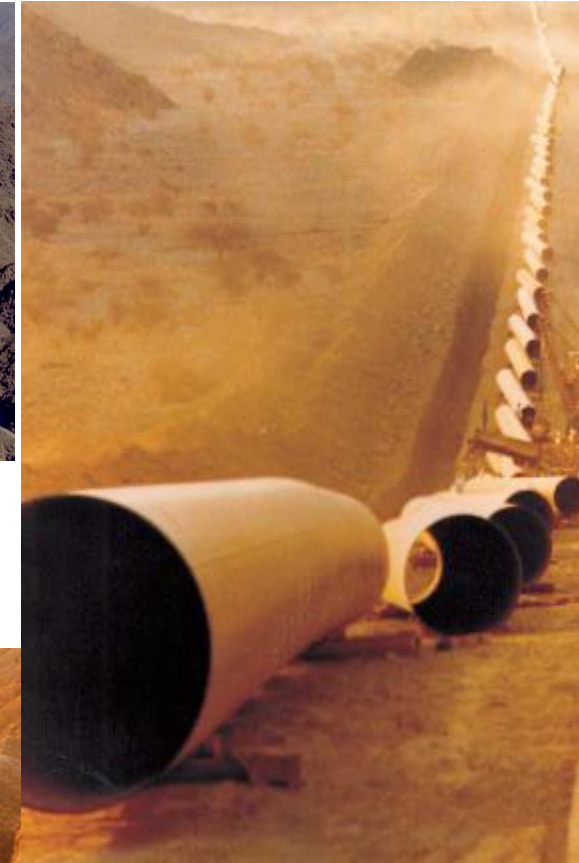
The logistics for the work included:

- Movement of **240,000 Tones of piping** along the route
- Supporting services of fuel
- Camps
- Consumables

In addition to the above works C.A.T. / Houston J.V. were entrusted with an additional contract to dewater and fill the lines with crude oil.



The right of way and the trench in parts had to be blasted out of the solid rock encountered on the route.



The route of the pipeline crossed the harsh desert conditions of the Saudi Arabian Western province with its Hijaz range of rough mountains.

Some of Our References

Oil & Gas, Off-sites and Utilities

Onshore Maintain Potential Construction Project

LOCATION

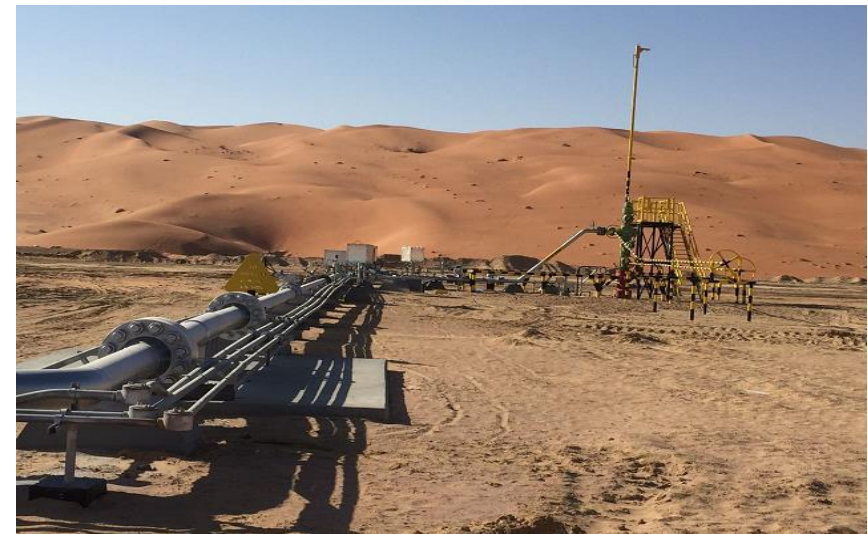
JUBAIL, SAUDI ARABIA

CLIENT

SAUDI ARAMCO

Installation of On shore facilities at various locations in Saudi Arabia consisting mainly of:

- Oil and Water Injection Well Head Facilities
- Flow Lines
- Trunk Lines
- Tie IN Manifolds



Haradh Satellite Fields Construction

LOCATION

SAUDI ARABIA

CLIENT

SAUDI ARAMCO

Installation of various facilities in Haradh Area
consisting mainly of:

- 286 Kms Flowlines
- Trunklines
- Transmission lines (8 to 24")
- 6 R/ Headers
- Gas manifold
- 5 OSB with IT services
- 5 TETRA Communication Towers
- 206 Kms of FOC
- HV Overhead Power lines
- Cathodic Protection



HARADH GAS PLANT Utilities and Offsite project

LOCATION

HARADH, SAUDI ARABIA

CLIENT

TECHNIP (ARAMCO)

Construction works for the Utilities and Offsite Works on Haradh Gas Plant for Saudi Aramco consisting of:

- Structural Steel
- Piping fabrication and erection
- Equipment erection
- Insulation Works



KHUFF GAS PROJECT

LOCATION

HAWIYAH AND HARADH AREAS,
SAUDI ARABIA

CLIENT

ARAMCO

Construction of:

- High pressure gas lines
- Wellheads
- Remote headers
- Chemical injection equipment
- Erection of vessels
- Piping works



Some of Our References

Storage & Product Handling Facilities

EPC for Onshore Works of the Petrochemical Port Expansion Project in the KFIP at Yanbu (SABTANK)

LOCATION

KING FAHD INDUSTRIAL PORT IN YANBU, KINGDOM OF SAUDI ARABIA

CLIENT

SABIC TERMINAL SERVICES CO. (SABTANK)

EPC project to expand the export capacity of chemicals.

- Refurbishment works of berth B41 by demolishing:
 - Existing 5 loading arms
 - Associated piping and controls
- Installing in their place a complete hose tower structure of 20 meters high assembled fully on a barge towed to location and put in place utilizing 800 tons barge crane.
- Construction of a new hose tower B40.
- E&I works for each Berth included material supply and erection of 12 ship loading arms, a hydraulic crane, fire fighting system, a slops system, fire and gas detection system, custody transfer meters, CCTV system, tank gauging system, DCS system, ESD system, lighting, and a UPS system.
- All interconnecting piping between the tank farm and the two berths, Pump Station, Pygas Vapor Recovery Unit, Glycol Cooling Unit, Substation, New Office Block, Mosque, Maintenance Workshop, Guard House, Car Park, Internal Roads, Tank Farm Bund Wall and related civil works.



ARABTANK The Yanbu Expansion Project

LOCATION

KING FAHD INDUSTRIAL PORT IN YANBU, KINGDOM OF SAUDI ARABIA

CLIENT

ARABTANK TERMINALS LTD.

- PC (Procurement & Construction)
- Supply and erection of four lines from the berth to the tank farm, a nitrogen line
- Two chemical pump stations
- Weight bridge
- Launcher / receiver stations
- Slop system
- Fire fighting pump station
- Truck loading station
- Interconnecting piping within the tank farm
- Car park
- Office building
- Warehouse & guardhouse
- internal roads
- Substation
- Internal lighting
- Tank gauging system
- DCS, ESD system, fire detection, CCTV and UPS systems Custody transfer meters
- Loading equipment at the berth



Construction of Water Storage Tanks in NWPS Marafiq External Facilities of the IWPP Projects

LOCATION

JUBAIL, SAUDI ARABIA

CLIENT

MARAFIQ

EPC for (5) Circular Storage Steel Tanks for potable water (96,000 m³ capacity each) along with all other associated works that included:

- Soil improvement and piling
- Civil works and foundations
- Access manholes
- Wash out connections
- Valve chambers
- piping works (20" - 60")
- cathodic protection, grounding and lightning protection
- PLC, level monitoring and control
- All site development such as drainage, access roads, pavement, guard house, parking sheds and security fence with perimeter lighting.



Some of Our References

**Industrial Buildings, facilities
Utilities**

NEW DOHA INTERNATIONAL AIRPORT (NDIA)

LOCATION

DOHA, QATAR

CLIENT

NDIA STEERING COMMITTEE

OVERSEAS BECHTEL INCORPORATED (OBI)

EPC for:

- Three Central Utility Plants (CUPs 2 , 3 and 4) at the New Doha International Airport for generating and distributing a total of 38,000 TR of Chilled water
- Housing of standby power generators, switch gear , transformers and power distribution facilities with a total capacity of 105 MW (6.6 KV and 11 KV) .
- Communication
- Sewer Lines & Potable and Fire Water systems.



INTEGRATED DISTRICT COOLING PLANT

LOCATION

THE PEARL, QATAR

CLIENT

QATAR COOL

The Integrated D.C. Plant is an EPC contract and comprises the design, supply, delivery, erection and installation on site of a district cooling plant with a guaranteed **capacity of 130,000 tons of refrigeration** and associated heat exchanger facilities, serving the Pearl Project in Doha - Qatar.

This D.C. plant is the biggest centralized cooling plant in the world. It includes architectural, civil and engineering works with all necessary electromechanical equipment.

The Building Architectural and Civil Engineering work comprises a 203 m long, 75 m wide and 34 m high x 3 floors main DC plant. The floor area is 16,000 sq m and the total approximate build up area is 48,000 sq m. involving 80,000 cu m of reinforced concrete . Works include also 18 HEX buildings (having a total approximate build up area of 1420 m2.) and 38 Energy Transfer Stations with a total of 120 Plate Heat Exchangers.



Transmission Pipelines for Mega Reservoirs (GTC)

LOCATION

DOHA, QATAR

CLIENT

KAHRAMAA

Construction of Pipelines:

- 1600mm 49.9km
- 1400mm 4.9km
- 1200mm 25.9km
- 900mm 20.8km
- 135 No. VALVE BOXES
- ROCK EXCAVATION of 1,100,000 m³
- 42.5 km of D.I. PIPE 1600mm
- 1.5 km of D.I. PIPE 1200mm + INCILLIARY WORKS
- EPC for 15km OF D.I. PIPE of various DIAMETERS 900, 600, 400 mm
- SS3B Proplongation Cost (Rawdat Rashed)



GHQ DISTRICT COOLING SCHEME

LOCATION

ABUDHABI, U.A.E.

CLIENT

SUMMIT DISTRICT COOLING CO.
LLC (JOINT VENTURE
SUMITOMO

& TABREED)

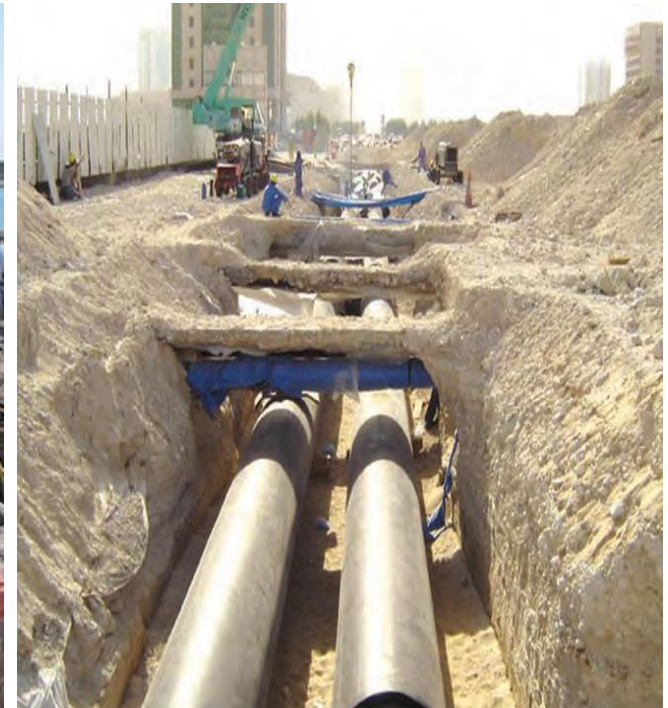
EPC project of a central chilled water cooling plant, with network, and energy transfer stations for the GHQ area in Abu Dhabi.

Plant capacity is **9,600 tons** expandable to 14,400 tons of refrigeration.

The plant built up area is 4,500 sqm. Pumps and electrical equipment are located in the basement, with chillers on the ground floor.

Four cooling towers are located to the side of the building, along with a thermal energy storage tank 4,600 meter cube.

Four heat exchanger buildings and related equipment are located at various locations on the site, and connected via chilled water network. This project supplies chilled water for the Armed Forces Area & the Grand Mosque in Abu Dhabi.



Some of Our References

Infrastructure and Roads

Zaria Water Supply Expansion Project Phase 1

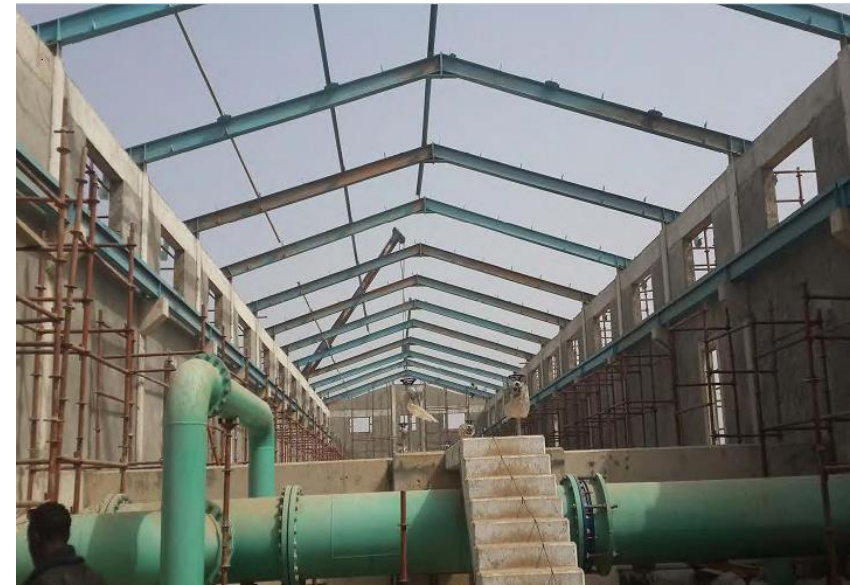
LOCATION:

Kaduna, Nigeria

CLIENT:

Kaduna State Water

- Construction of High Lift Pumping Station capable of lifting 150 MLD of treated water
- Construction of Raw Water Intake Pumping Station capable abstracting 172.50 MLD.
- Construction of Raw Water Intake Pipes 5 off DN800 from the Dam to Intake Pumping Station
- Construction of Staff House (3 Nos. of House Type 1, 4 Nos. of House Type 2, 3 Nos. of House type 3 and 6 Nos. of Operators House)
- Construction of Raw Water Mains 1200DN from Intake Pumping Station to the Water Treatment Plant
- Construction of 12 Nos. of Horizontal Flow Clarifiers(Capacity = 36,192m³)
- Construction of Contact Clear Water Tank (Clear water Capacity= 18,750m³)
- Construction of Wash Water Settlement Tank (Capacity= 8,908m³)
- Construction of Supernatant Return Tank(Capacity = 705m³)



Rehabilitation And Upgrading Of Water Supply Schemes In AKWA IBOM Lot 3(a,b,c) Civil & Pipeline:

LOCATION:

Kaduna, Nigeria

CLIENT:

Kaduna State Government, Ministry of Water Resources

- Refurbishment of existing Water Treatment Plants and Bareholes;
- Construction of New water Treatment Plants. Distribution Network Pipeline Installations.
- SOW includes construction of 50km of DI Pipes DN1400mm to DN300mm



Dualization of Kano-Maiduguri Road, Section 3: Azare - Potiskum road

LOCATION

Yobe & Bauchi States, Nigeria

CLIENT

Federal ministry of Works in Yobe & Bauchi States

- Construction of Dualization of Azare-Bulkachuwa - Danbam-Potiskum Road, length: 101.843 km,
- Earthworks
- Drainage structures
- (4) bridges (1x30m, 2x200m and 1x60m)



Some of Our References

Buildings

MARINA TOWERS DEVELOPMENT

LOCATION

BEIRUT CENTRAL DISTRICT,
LEBANON

CLIENT

MARINA TOWERS S.A.L.

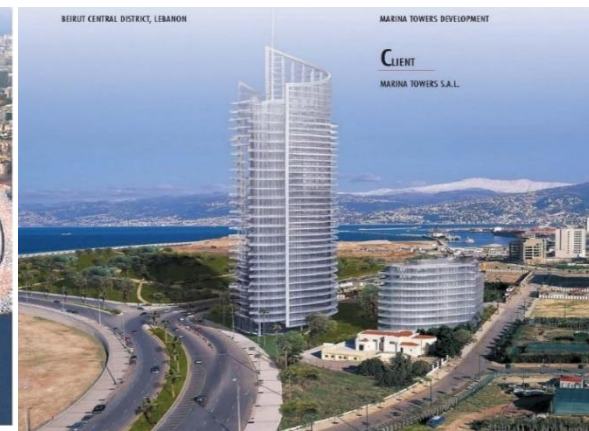
Marina Towers is one of the largest and most distinguished prime waterfront residential development on the Mediterranean Sea.

It is situated on the dramatic coastline of central Beirut and overlooking the new and exclusive Beirut Marina. The project consists of a residential tower, a garden residential building and an office building. Built on 7,100 sqm of land and reaching a towering height of 160 m. The crescent shape plan is expressed at the top as two planes of glass, likened to sails caught in the wind.

The residential tower consists of 26 floors divided into 17 simplex floors and 7 duplex floors with a two-floor penthouse and a private health club facility. Directly opposite Marina Towers and exclusively linked by the city's only underground tunnel is the Beirut Western Marina which can accommodate up to 500 boats.



Beirut
Central
District Park



Beirut Western Marina

PORTO ARABIA

LOCATION

THE PEARL, QATAR

CLIENT

UNITED DEVELOPMENT COMPANY

The Pearl-Qatar is one of the largest real state developments of its kind in Qatar. Covering 400 hectares of reclaimed land, with an anticipated population of 45,000.

Porto Arabia containing the largest of the three planned marinas of the Pearl Island, is one of the most upscale regions in the project with a 2.5 km boardwalk overlooking an award-winning marina. It boasts high-end restaurants, cafes, and shops , condominiums, penthouses, multi-storey townhouses and podiums.

Scope: value engineering , detail drawings , supply and construction of Porto Arabia Parcels 4 thru 18 comprising the following :

1. **11 Town House clusters** with a total built up area of **85,807 m2**
2. **11 Retail spaces under town houses** with a total built up area of **23,000 m2**
3. **9 Retail nodes** with a total built up area of **65,028 m2**
4. **3 Parking Structure** with a total built up area of **60,223 m2**

C.A.T. International Qatar W.L.L. was also awarded under a separate contract the supply and construction of the 2.5 km boardwalk for Porto Arabia including all underground services , above ground facilities and structures , granite pavers , Aluminum hand railing , Benches and Trash receptacles , lighting , landscaping, planter pots, and plantation .



AL EMADI OFFICE TOWER

LOCATION

DOHA, QATAR

CLIENT

MR. MOHAMED ALI AL-EMADI

- The Project consists of an Office Tower, built on 3500 sqm of land.
- The Office Tower comprises of 2 basements, one Ground Floor and 19 Floors.
- Total Built up Area is 28.000 sqm with a parking for 203 cars.



DOHALAND INFRASTRUCTURE WORKS PHASE 1 A

LOCATION

HEART OF DOHA, QATAR

CLIENT

MSHEIREB PROPERTIES

The scope of works comprises the construction of an underground service corridor network, associated plant rooms and the utility infrastructure to be located with the services corridors at Phase 1A as follows:

Upgrade of Perimeter roads including junctions, utility diversions and strengthening of existing utilities.

Construction of multi level service corridors, following the route of primary and secondary roads at ground level containing the following:

- Construction of the structural frame
- Ground/roof slabs for approximately 700m length of 3 levels of underground service corridor structures designated Service Corridors E (north), F, G (north), M and O.

The service corridors generally comprise an open frame reinforced concrete structure with blockwork walls.

- Irrigation pipe work, drainage, electrical supplies and tree/plant boxes for Hard and Soft Landscaping.
- Construction of a Major Plant area that includes: Construction of the structural frame and slabs for generally 3 levels of underground Plant room area PR2 comprising a total on plan area of approximately 13,000m². The PR2 Plantroom is generally an open frame reinforced concrete structure for housing HV substations, communication node and district cooling plant and storage and, fan room 5.
- Space for the Primary Sub-Station for the Mohammed bin Jassim area Primary Sub-Station electrical equipment.
- Space for the District Cooling Plantroom.
- Construction of the structural frame for generally 4 levels of underground fan room Plantroom areas comprising a total on plan area of approximately 2,000m². The fan rooms designated FR2 and FR3 are generally open frame reinforced concrete structures for housing large fans as part of the overall fire and life safety strategy for the underground service corridor network.



AN-NAHAR & L'ORIENT LE JOUR HEADQUARTERS “Al-Borj”

LOCATION

BEIRUT CENTRAL DISTRICT, LEBANON

CLIENT

SOCIETE IMMOBILIERE DE PRESSE (SIP)

Al-Borj building is a 22,000 sqm office development with two commercial floors; 6,000 sqm press & publication area and a 1300 sqm roof top restaurant.

The Post tensioned reinforced concrete framed structure together with the structural glazed façade provides a unique open space in the office floors supported by latest Electro-Mechanical smart systems. Functionality analysis and program management was conducted for An-Nahar & l'Orient-Le-Jour 6,000 sqm offices in accordance with intentional Newspaper standards and practice.



L.O.P. HEADQUARTERS

LOCATION

BEIRUT, LEBANON

CLIENT

LEBANESE ORDER OF PHYSICIANS
(LOP)

A multi-functional smart Building
with a gross built-up area of
17,000sqm

Equipped with the latest Electro-
Mechanical Systems, including a
740-Seat State-of-the-Art
Auditorium and Meeting Rooms

20m High Main Entrance Atrium
with a 475m Spider Façade.



Katsina Shopping Mall at Katsina:

LOCATION

Katsina, Nigeria

CLIENT:

Ministry of Works & Housing &
Transport, Katsina State

- Construction of Shopping Complex including Civil, Mechanical, Electrical and other ancillary works



Side view, showing part B & D work in progress.



Installation of aluminum windows.



Front view showing entrance of part B after completion of plastering work.



Front view showing entrance of part D.

THANK YOU